

FACT SHEET 2024/2025

School of Business, Economics and Law International Office

Official Name School of Business, Economics and Law
University of Gothenburg, Sweden

Erasmus Code S GOTEBOR01
EUC Code 29364

Website www.gu.se/en/school-business-economics-law/study-here/exchange-studies

Postal Address International Office, School of Business, Economics and Law
University of Gothenburg
PO Box 602
SE-405 30 Gothenburg, Sweden

Office Email internationaloffice@handels.gu.se
Staff Catharina Miklin

– Director

E-mail: catharina.miklin@gu.se

Phone: +46 31 786 4946

Sara Fallegård
– Outgoing Coordinator

E-mail: sara.fallegard@gu.se

Phone: +46 31 786 4452

Julia Palmstedt Shokur
– Incoming/Outgoing Coordinator

E-mail: julia.palmstedt.shokur@gu.se

Phone: +46 31 786 4494

Kajsa Wigren

– Outgoing Coordinator

E-mail: kajsa.wigren@gu.se

Phone: +46 31 786 4649

Chie Inoue

– Incoming Coordinator

E-mail: chie.inoue@gu.se

Phone: +46 31 786 4493

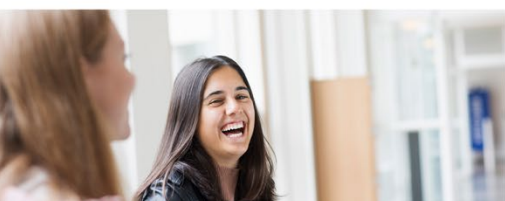
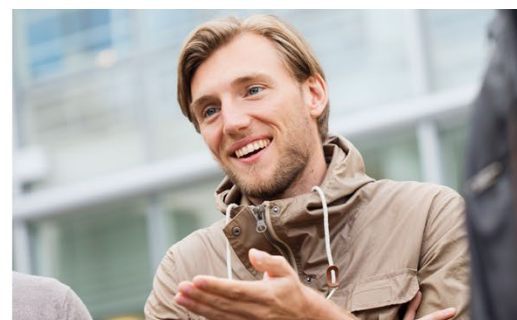


UNIVERSITY OF GOTHENBURG
SCHOOL OF BUSINESS, ECONOMICS AND LAW



Contact for incoming students	<p>International Office E-mail: incoming@handels.gu.se Phone: +46 31 786 4493/4494 Website: https://www.gu.se/en/school-business-economics-law/study-here/exchange-studies/incoming-exchange-students</p>
Semester dates	<p>Autumn Semester: September 2, 2024 - January 19, 2025 Spring Semester: January 20, 2025 - June 8, 2025</p>
Nomination process	<p>Partner institutions are invited to nominate students using an online nomination link. We will provide the link prior to the nomination periods:</p> <p>Autumn Semester: March 1 – May 1 Spring Semester: September 1 - November 1</p> <p>Nominated students will be contacted with the necessary information for application and registration in due time.</p> <p>For questions regarding nominations, please email us at incoming@handels.gu.se</p>
Application period	<p>Autumn Semester: March 1 - May 15 Spring Semester: September 1 - November 15</p>
Courses	https://www.gu.se/en/school-business-economics-law/course-offer
Workload	<p>30 ECTS-credits per semester is considered full-time studies. In order to obtain and maintain student status and access to the campus facilities, student accommodation, insurance coverage, etc., course registration and class attendance is required throughout the entire duration of the semester.</p>
Language requirements	<p>Although no official records of English are requested, we do require nominated students to be proficient in English both in writing and in communicating in the classroom. The expected level of English proficiency is equivalent to minimum IELTS 6.5 (total) or TOEFL 79 (total).</p>
Erasmus+ Learning Agreements	<p>It is our policy to sign this document upon the student's arrival at our campus. If signing the documents is required by the sending institution prior to arrival, we ask that you send us a one-time advice of this for an exception to be made. Students who meet this requirement must wait until they have been allocated the courses indicated on the document as we will not be able to sign learning agreements before then.</p>
Exams	<p>No set exam period. Exams most often occur at the end of each course period. Students are encouraged to check the course schedules. NOTE: For the autumn period, exams can occur from December until the middle of January.</p>

Accommodation	<p>Provided by the Student Housing Services</p> <p>E-mail: studenthousing@gu.se or visit www.gu.se/en/study-in-gothenburg/when-you-are-here/student-housing</p>
Swedish language course	<p>www.gu.se/en/study-in-gothenburg/study-options/study-swedish</p> <p>(Free of charge)</p>
Welcome program	<p>Provided by the University of Gothenburg's Welcome Services</p> <p>E-mail: welcomsprogramme@gu.se or visit www.gu.se/en/study-in-gothenburg/when-you-are-here/introduction-days</p>
Students with disabilities	<p>Incoming exchange students can apply for special support such as note-taking, adapted course literature, adapted examinations and support from a mentor or special software that can make reading and writing easier. See www.gu.se/en/study-in-gothenburg/when-you-are-here/student-services-and-support/studying-with-a-disability for further information</p>
Grading systems	<p>There are four grading systems at the University of Gothenburg. The course syllabus will specify which grading scale applies for each course. The grading scale is specified in a footnote on the print-out of the transcript of records. For detailed information please visit https://studentportal.gu.se/english/graduation-and-degrees/degrees/grades-and-grading-scales</p>



Information for **INCOMING EXCHANGE STUDENTS** **2024/2025**

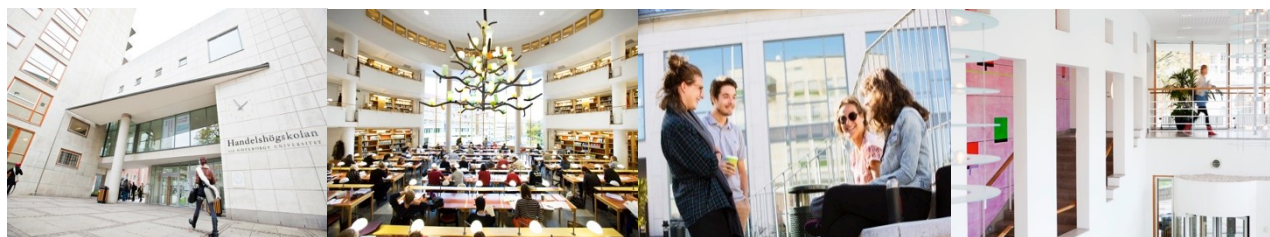


Why the School of Business, Economics and Law?	<ul style="list-style-type: none"> - The first Business School in Sweden to be triple accredited (AMBA, AACSB and EQUIS) - Sweden's largest Business School located in Sweden's second largest city of Gothenburg - Ranked no 1 among Swedish universities in the 2023 Climate Action Ranking with strong sustainability focus and profile
Why Gothenburg?	<ul style="list-style-type: none"> - The most sustainable city in the world for seven consecutive years - A hotspot for innovation and sustainable development and one of Europe's fastest growing regions - In terms of patents per capita, Gothenburg is the 12th most inventive city in the world - Located in the heart of Scandinavia; 3 hours from the three capitals Oslo, Copenhagen and Stockholm
Business Environment	<p>Gothenburg is a key hub for Swedish research and development and home to many world-leading companies and renowned academic institutions. In recent years, global companies such as Ericsson, the Volvo Group, AstraZeneca, Saab, SKF, Geely, Volvo Cars and many more, have invested heavily in Gothenburg to develop new products and services.</p>

General Information and Contact	
Erasmus Code	SGOTEBOR01
EUC Code	29364
Web	www.gu.se/en/school-business-economics-law https://www.gu.se/en/school-business-economics-law/study-here/exchange-studies/incoming-exchange-students
Contacts	<p>Student Desk E-mail: incoming@handels.gu.se Telephone +46 31 786 4493/4494</p> <p>Visiting Address International Office (D6) Vasagatan 1 SE-411 24 Gothenburg, Sweden</p> <p>Postal Address PO Box 602 SE- 405 30 Gothenburg, Sweden</p>
Academic Calendar	Autumn Semester: September 2, 2024 - January 19, 2025 Spring Semester: January 20, 2025 - June 8, 2025
Application Period	Autumn Semester: March 1 - May 15 Spring Semester: September 1 - November 15
Application Process	Instructions will be sent out to all nominated students.
Required Documents	<ul style="list-style-type: none"> • Transcript of records • Copy of passport (or national ID card for EU/EEA citizens)
Mandatory Orientation Session (Online)	Date to be announced, usually a few days before the semester starts. Attendance is compulsory.

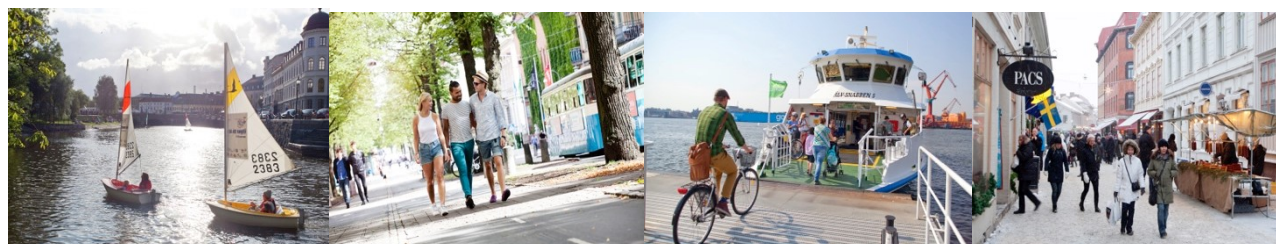


Academic Information	
Course Information	Complete information will be available before the start of the course selection period at https://www.gu.se/en/school-business-economics-law/course-offer
Course Framework	As a student in Sweden, you will be expected to take quite a lot of responsibility for your own studies. Unlike in many other university cultures, instructors here give students much flexibility in the way they learn in order to encourage creative, critical and independent thinking. Group work and presentations are quite common, and your attendance is therefore important and expected throughout the duration of the course/session.
Course Level	We offer courses at both Bachelor and Master level.
Course Selection Period	Autumn Semester: June 1 - 8 Spring Semester: December 1 - 8
Full-time Workload	30 ECTS credits per semester
Exams	No set exam period. Exams most often occur at the end of each course period. Students are encouraged to check the course schedules. NOTE: For the autumn period, exams can occur from December until the middle of January.
Transcript of Records	Will be sent to students and their home institution within two months after the end of the exchange period.
Language of Instruction	English (and Swedish if possible).
Language Requirements	No formal requirements, however, a minimum IELTS 6.5 (total) or TOEFL 79 (total) equivalency is highly recommended and encouraged, to ensure that students are able to cope with the academic work.



Practical Information	
Accommodation	Accommodation is handled by the Student Housing Services. Application for housing is to be done online during the application period. More information is available at www.gu.se/en/study-in-gothenburg/when-you-are-here/student-housing
Swedish Language Course	Four levels are offered free of charge for exchange students. Places are offered on a first-come, first-served basis and consist of 10 classes of three hours each. www.gu.se/en/study-in-gothenburg/study-options/study-swedish
Welcome Program	Welcome program by the University of Gothenburg's International Centre: www.gu.se/en/study-in-gothenburg/when-you-are-here/introduction-days
Student Buddy	All students can apply to have a student buddy during their period of study. This can be done during the application process. www.gu.se/en/study-in-gothenburg/when-you-are-here/student-life/student-buddies
Students with disabilities	Incoming exchange students can apply for special support such as note-taking, adapted course literature, adapted examinations, and support from a mentor or special software that can make reading and writing easier. www.gu.se/en/study-in-gothenburg/when-you-are-here/student-services-and-support/studying-with-a-disability
Grading structure	There are four grading systems at the University of Gothenburg. The course syllabus will specify which grading scale applies for each course. The grading scale is specified in a footnote on the print-out of the transcript of records. For detailed information please see: https://studentportal.gu.se/english/graduation-and-degrees/degrees/grades-and-grading-scales
Insurance	The University of Gothenburg provides all incoming exchange students with an insurance covering medical expenses incurred during their period of study, free of charge. It also contains a certain accident coverage, as well as liability and legal expenses coverage. It applies twenty-four hours a day, only in Sweden, for all students - unless the student has a Schengen visa in which case the coverage applies throughout the Schengen countries. www.kammarkollegiet.se/engelska/start/all-services/insurance/insurance-for-students-and-foreign-visitors/insurance-for-exchange-students-in-sweden-student-in

Visa Requirements	<p>If you are from a country outside EU/EEA and plan to study for more than three months in Sweden, you will need a residence permit/visa. You can apply for the permit/visa at the Swedish Embassy or Consulate in your home country.</p> <p>For more information, please see: www.swedenabroad.se/en www.migrationsverket.se/English</p> <p>If you are from an EU/EEA country, you do not need a residence permit or visa to enter Sweden. However, if you intend to study for longer than three months, you must register with the Swedish Migration Agency within three months of arriving.</p> <p>For more information see: www.migrationsverket.se/English/Private-individuals/EU-EEA-citizens-and-long-term-residents</p>
Work in Sweden	<p>You are allowed to work while studying in Sweden if you have a residence permit (student visa). You can even stay in Sweden to work after you've completed your studies, if you are from the EU/EEA countries. If not, you will have to contact the Migration Agency, who can help you apply for an extension on your visa and give you other information that you may need. Read more at www.migrationsverket.se/English</p>



Gothenburg and Surrounding Area	
Location	<p>The School of Business, Economics and Law is situated in the heart of the city, close to restaurants, cafés, libraries, attractions, parks and shopping.</p>
Cost of Living	<p>The Swedish Migration Board requires that you are able to support yourself financially during your stay in Sweden. The amount that needs to be guaranteed is SEK 8 694 per month (2022). For more information, please see:</p> <ul style="list-style-type: none"> • https://studyinsweden.se/plan-your-studies/fees-costs • www.gu.se/en/about-the-university/welcome-services/cost-of-living